

LFS6000 Features

- High Speed // Low Drag Design
- 2x Electronic Zoom
- White Hot // Black Hot Setting
- 2 Sensor Choices: 320 x 240 or 640 x 480
- Installs like a Blade Antenna
- Dual Video Outputs



LFS6000

Lexavia's LFS6000 is the most compact and lightest weight Enhanced Vision System (EVS) sensor available today. Optimized for high speed, low drag aircraft requirements, the sensor housing is similar in size to the "wireless mouse" that most people use with their personal computers. This sensor is easily installed and offers a great aesthetic match to the lines of even the sleekest, most aerodynamic turbine powered aircraft.

Like the Lexavia LFS3500, the LFS6000 is available with custom choices for magnification and field of view. It can be configured with either the latest generation 320 x 240 resolution sensor, or the extremely high performance 640 x 480 element sensor array, which uses the most recent generation VOx long wave infrared technology. Both the 640 x 480 resolution and 320 x 240 resolution sensors offer 2x electronic zoom, image freeze and enhancement.

Lexavia's LFS6000 interfaces with the latest flat panel display systems. All of Lexavia's EVS sensors can also be a part of a complete standalone Lexavia EVS system. Whether a full EVS system or a integrating into the latest cockpit, Lexavia has what you need.

The Lexavia Difference



Landing

The Lexavia System provides the highest resolution and dynamic range available of all EVS sensors in its class.



Mountainous/Approach

A perfect compliment to your synthetic vision system by showing real time objects on approach and on the runway.



Detect Cloud Buildup

Our EVS technology allows you to see storm buildup at night, before it is severe enough to be displayed on your weather radar.



Safety

With Lexavia's EVS system there's no better way to see in the dark or in inclement weather.

LFS6000 Specifications:

- Power: Camera 12-28 VDC, 22W (with Heater)
- Dimensions: (LWH): 4.85 x 2.10 x 1.42 inches // 12.3 x 5.3 x 3.9 cm
- Weight: 0.35 lbs // 0.16 kg
- Sensor Resolution: 320 x 240, or 640 x 480
- Design Standards: RTCA, DO-160F Compliant
- Format: NTSC or PAL
- RS 232/422/485
- Dual Video Output



The Lexavia System Interconnect Options:



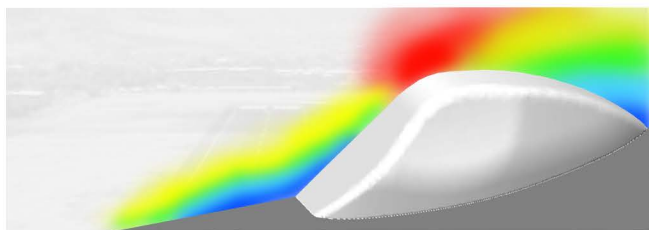
Installed Sensor Closeup:

Rising only 1.42 inches into the airstream the LFS6000 is low-drag and aerodynamic.



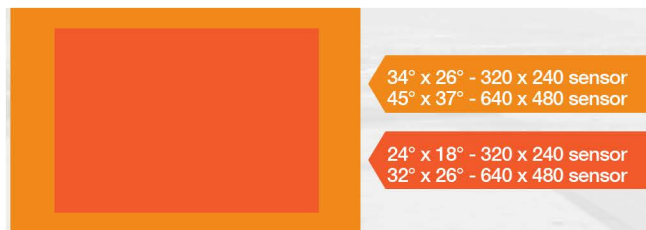
Installed Sensor Wideview:

The LFS6000 is specifically designed to be installed directly on the aircraft without use of any fairing.



CFD Airflow Model:

Lexavia's in house capability to perform CFD and Lewice analysis of the LFS6000 verifies the performance of this sensor.



Field of View Chart:

LFS6000 is available in multiple fields of view.